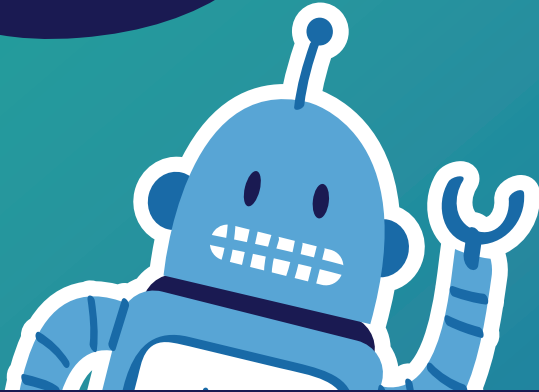




2020

FINAL REPORT



PROUDLY PRODUCED BY



MOREHEAD
PLANETARIUM+
SCIENCE CENTER

The University of
North Carolina at Chapel Hill



MPSC



NCSciFest

Photo by Vicki Henderson Randolph



UNC-TV



NCSciFest

Photo by Vicki Henderson Randolph



Mute



Stop Video



35,154

Participants



Impacts



Partner Stories

[Learn More](#)

North Carolina Science Festival

is a statewide, month-long celebration of STEM — science, technology, engineering and mathematics — with community-based events hosted by museums, science centers, colleges, universities, businesses, parks, libraries, and other sites.

Founded in 2010 by Morehead Planetarium and Science Center at the University of North Carolina at Chapel Hill, the Festival has served more than 2 million participants of all ages since its inception.

The Festival is made possible through generous support from leading business and government partners and through the participation of hundreds of event hosts across North Carolina.

 **P.S. Any photos depicting large groups were taken pre-COVID-19!**



North Carolina Science Festival

Morehead Planetarium and Science Center

The University of North Carolina at Chapel Hill

JONATHAN FREDERICK
Festival Director
jfred@unc.edu

TODD BOYETTE, PH.D.
Festival Co-founder
todd_boyette@unc.edu

CRYSTAL HARDEN
Director of Programs and Strategic Initiatives
charden@unc.edu

OMAR BELL
Director of Advancement
omar_bell@unc.edu

ADAM PHELPS
Sponsorships
arphelps@unc.edu

Advisory Board

CHANCELLOR EMERITUS JAMES MOESER, Chair
UNC-Chapel Hill

BETSY BENNETT, PH.D.
Capital Development Services

JOHN BURRIS, PH.D.
Burroughs Wellcome Fund

ALFRED G. CHILDERS, PH.D.
MagellanScience.org

JOSEPH M. DESIMONE, PH.D.
NC State University
UNC-Chapel Hill

CHANCELLOR PHILIP DUBOIS
UNC Charlotte

MARILYN FOOTE-HUDSON
NC GlaxoSmithKline Foundation

ANN B. GOODNIGHT
SAS

JOHN HARDIN, PH.D.
NC Department of Commerce

JENNIFER HAYGOOD
NC Community College System

HOWARD N. LEE
Howard N. Lee Institute

CHARLES A. SANDERS, M.D.
Retired Chairman & CEO,
GlaxoSmithKline

MELISSA SEYMOUR
Biogen Foundation

CHRISTY L. SHAFFER, PH.D.
Hatteras Venture Partners

RICHARD SUPERFINE, PH.D.
UNC-Chapel Hill

KIMBERLY VAN NOORT, PH.D.
University of North Carolina System

JULIA WHITE
on behalf of Governor Roy Cooper
NC Governor's Office

CHANCELLOR W. RANDOLPH WOODSON
NC State University

Dear Festival Friends,

If there is one word to sum up the last few months, it's probably unprecedented. This year's North Carolina Science Festival was shaping up to be our biggest and best. We had a record number of applications from elementary schools for our Duke Energy Science Night program. IMPACTS, our statewide scientist communication training program, had more participants than ever. Through the winter, dozens of scientists had visited middle schools to share their passion for STEM. The Statewide Star Party was gearing up to engage thirty-six sites with the theme Seeing the Universe. On top of all that, we had four hundred events on the Festival's calendar and we were on track to have a presence in all one hundred NC counties. About the only thing that could stop us was—well... what did. Something unprecedented.

We'd thought through and prepared for many disaster scenarios. But this March, the spread of coronavirus forced us to face something completely new. We had to make the tough but necessary call to cancel all events and to encourage our partners to do the same. The well-being of our audiences and our partners has always been our top priority, which made the decision painful but not particularly difficult.

After cancelling, we faced another unprecedented moment. What would we do now? We decided to do what we've always done. We listened to our partners and committed ourselves to celebrating the nonformal, nontraditional programmatic innovations you were developing across the state. We shared videos, resources, and curated a list of hands-on, home-friendly activities. Thus, the first ever Virtual North Carolina Science Festival was born.

Since April 1, we've had visitors from all over the world partake in NC-based STEM activities online in new and exciting ways. It wasn't the festival we envisioned, but it was a Festival that honored the spirit we envisioned in 2010 when we launched the inaugural North Carolina Science Festival. The Virtual NCSiFest was fun and inspiring, and—thanks to you—it was local.

As spring turns to summer and the nation grapples with its racial history and the pandemic, we would like to say that we are incredibly fortunate to call you our friends, our co-workers, and our STEM family. Thank you for everything you do and we hope you and yours are well and safe. We look forward to continuing to work with you, to serving with you, and to reshaping our STEM community with you to build a better and more equitable North Carolina.

Sincerely,

Todd Boyette

Director, Morehead Planetarium and Science Center


Co-founder, North Carolina Science Festival

Jonathan Frederick

Director, North Carolina Science Festival

Senior Manager, Morehead Programs and Strategic Partnerships

Contact

 **Campus Box 3480**
Chapel Hill, NC 27599-3480

 **919-843-8329**

 www.ncsciencefestival.org

 ncscifest@unc.edu

By the Numbers

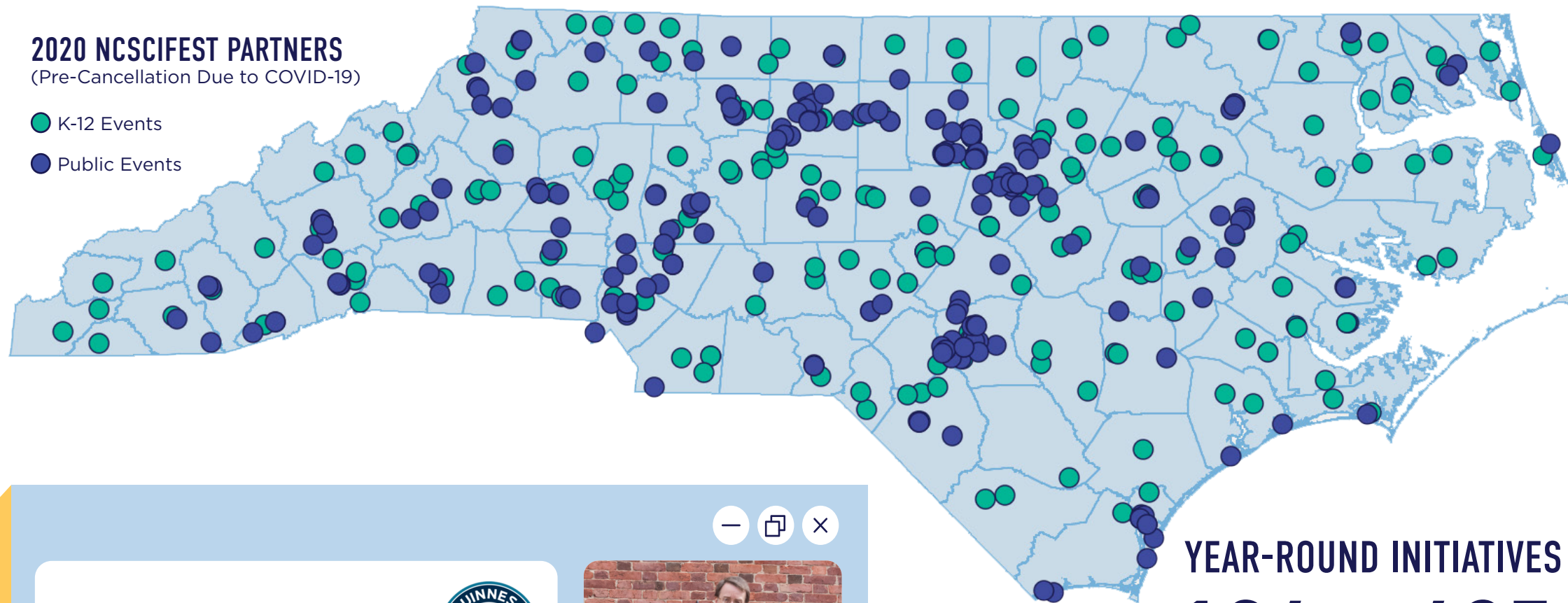
~~375~~
SCHEDULED
PUBLIC EVENTS
FROM 160 PARTNERS



336
VIRTUAL
PUBLIC EVENTS
FROM 41 PARTNERS

2020 NCSCIFEST PARTNERS (Pre-Cancellation Due to COVID-19)

- K-12 Events
- Public Events



Duke Energy Science Nights

150 KITS 97 NC COUNTIES

Your Message Here...

We set a World Guinness Record!
For highest launch from a Galilean Cannon.



HEIGHT OF BALL LAUNCHED
13.5 meters
(44 feet 6.5 inches)

PREVIOUS RECORD
11.5 meters
(37 feet 8 inches)



Your Message Here...

YEAR-ROUND INITIATIVES

134 EVENTS 405 PARTNERS

35,154
TOTAL
PARTICIPATION



35 STATEWIDE STAR
PARTY KITS
Distributed to NC partners
Funded by NC Space Grant

IMPACTS

Inspiring Meaningful Programs and Communication Through Science (IMPACTS) was a four-year, statewide public science communication and outreach initiative funded by the North Carolina GlaxoSmithKline Foundation. Here's a snapshot of the program's success from 2019-2020:

47
VISITS

68
IMPACTS
GRADUATES

181
CLASSES

4,466
STUDENTS SERVED



Partner Success & More

Exploring the Outdoors During Quarantine

NCSiFest partners across the state have been mindful of the impact of staying indoors on a screen each day and have offered creative ways for Festival participants to explore outdoor spaces near them.



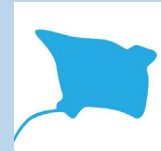
SYLVAN HEIGHTS BIRD PARK
SCOTLAND NECK, NC

Backyard Science, anyone?

Exploring outdoors can feel like a new adventure each time you step outside. Why not try your own backyard? Sylvan Heights Bird Park released learning videos about dandelions, soils, pill bugs and more. Each episode ends with an activity for viewers to try at home with easy-to-find materials.



Your Message Here...



CATAWBA SCIENCE CENTER
HICKORY, NC

Flower Power!

The Catawba Science Center started an At-Home Science initiative that includes a compilation of outdoor activities like how to identify flora and fauna, a weekly #PhysicsFriday challenge via social media, and short science videos that align with NC elementary school science standards.

Your Message Here...

Presenting Sponsor in the News

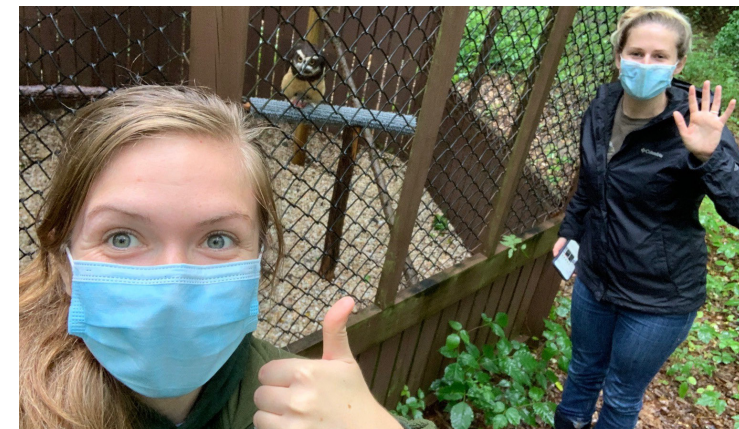
Biogen Foundation committed \$10 million to support global response efforts and communities impacted by the COVID-19 pandemic. Funds supported non-profit organizations in the U.S., including Massachusetts and North Carolina where many Biogen employees live and work.



Birds of Prey

CAROLINA RAPTOR CENTER | HUNTERSVILLE, NC

The Carolina Raptor Center quickly developed social media content by hosting daily livestreams of some of their birds and provided adventure sheets and enrichment projects for people to try at home. Their Avian Home Adventures program allowed them to connect with new supporters and as a result, they received additional donations to help offset lost revenue due to temporary closures. Their online success is a case study for creating engaging content online.



UsefulScience Podcast

We forged a new partnership with the Useful Science Podcast to provide audio editing support. The podcast normally airs once per month, but we were able to bring three stories to life during April's 2020 Virtual NCSiFest.

Your Message Here...



PRODUCING INSTITUTION SPOTLIGHT

Explora las estrellas

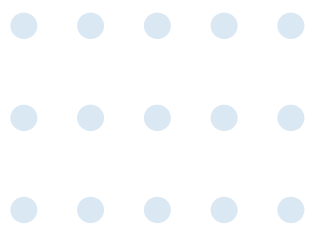
With an Ideas That Matter grant award from Sappi North America, we developed and distributed 750 bilingual family astronomy kits to families in North Carolina. We partnered with organizations serving Spanish-speaking populations in the state including the Mexican Consulate, East Durham Children's Initiative, Reynolda Branch Library, and six other organizations to distribute the kits. This project is a part of our commitment to accessibility and #ScienceForAll.



Supporting Healthcare Workers

At the beginning of North Carolina's Stay-At-Home order, we repurposed STEM supplies to donate more than 1,000 pairs of gloves that our director delivered to UNC Health.

Event Hosts



The North Carolina Science Festival would like to thank the following partners for their leadership in sharing STEM with their communities.

- | | | |
|---|--|---|
| A Time For Science: Grifton | Asheville Science Tavern | Bruce Drysdale Elementary School |
| A.C. Reynolds Middle School | Ashley Academy | Buckland Elementary School |
| Affairs Of The Family | Aurora Fossil Museum | Burgaw Elementary School |
| After School Brilliance | Beaufort Elementary School | C.G. Credle Elementary School |
| Ahoskie Elementary School | Bertie Middle School | Cabarrus County Public Library |
| Alamance Community College | Bessemer City Central Elementary School | Cane Creek Middle School |
| Alamance County Public Library: North Park Branch | Bethel Elementary School | Canterbury School |
| Alderman Elementary School | B.H. Tharrington Primary School | Cape Fear Botanical Garden |
| Allenbrook Elementary School | Big Brothers Big Sisters of the Triangle | Cape Fear Center for Inquiry |
| Andrews Middle School | BioNetwork | Cape Fear Museum of History and Science |
| Animal Park at the Conservators Center | Blue Jay Point County Park | Cape Fear River Watch |
| Appalachian State University | Blue Ridge Elementary School | Carolina International School |
| Aquarium & Shark Lab by Team ECCO | Bowman Middle School | Carolina Raptor Center |
| Ashe County Homeschool SciDay | Broad Creek Middle School | Carolinas Aviation Museum |
| Ashe Science Club | Broadway Elementary School | Carrington Middle School |
| Asheville Makers | Brown Education Initiative | Carter Community Charter School |
| | | Carthage Elementary School |
| | | Carvers Creek State Park |
| | | Catawba County Library System |
| | | Catawba Science Center |
| | | Cedar Creek Middle School |
| | | Cedar Ridge Elementary School |
| | | Celeste Henkel Elementary School |
| | | Central Elementary School |
| | | Chadbourne Elementary School |
| | | Chapel Hill Public Library |
| | | Charlotte Hawkins Brown Museum |
| | | Chatham Community Library |
| | | Chatham Middle School |
| | | Cherokee County Schools |
| | | China Grove Middle School |
| | | Chocowinity Middle School |



- | | | |
|--|---|---|
| City of Lenoir | Cumberland County Public Library & Information Center: Spring Lake Branch | East Union Middle School |
| City of Raleigh Parks, Recreation and Cultural Resources, Nature Program | Cumberland County Public Library & Information Center: West Branch | East Wake Academy |
| City of Raleigh Solid Waste Services | Cumberland County Schools: Go Green Initiative | Eastern Wayne Elementary School |
| Cloverleaf Elementary School | Currituck County Middle School | Eastlawn Elementary School |
| Coastal Land Trust | Dana Elementary School | Edneyville Elementary School |
| Code Ninjas | Davidson College | Elise Middle School |
| Conway Middle School | Deep River Elementary School | Elk Knob State Park |
| Copeland Elementary School | Devonshire Elementary School | Eno River Academy |
| Corning Optical Communications | Discovery Place Kids - Rockingham | Envision Science Academy |
| Cowan Museum of History and Science | Discovery Place Science | Eta Zeta Homeschool Honor Society |
| Creswell Elementary School | Drexel Elementary School | Everetts Elementary School STEM Academy |
| Cullowhee Valley School | Duke Science & Society | Fair Grove Elementary School |
| Cumberland County Public Library & Information Center: Bordeaux Branch | Duke University | Fairview Elementary School |
| Cumberland County Public Library & Information Center: Cliffdale Regional Branch | Duplin County Schools | Falls Lake Academy |
| Cumberland County Public Library & Information Center: East Regional Branch | Durant Nature Preserve | Family Code Night |
| Cumberland County Public Library & Information Center: Headquarters Branch | Durant Road Middle School | Fascinate-U Children's Museum |
| Cumberland County Public Library & Information Center: Hope Mills Branch | Durham Parks and Recreation | Fayetteville State University |
| Cumberland County Public Library & Information Center: North Regional Branch | E.O. Young Elementary School | First Impressions Academy |
| | East Arcadia Elementary School | FIRST North Carolina |
| | East Carolina Biodiversity Initiative | Flyleaf Books |
| | East Elementary School | Forest City Dunbar Elementary School |
| | East McDowell Middle School | Forest Hill Elementary School |
| | East Rockingham Elementary School | Forest Hills Middle School |
| | | Franklin County Schools |

Franklinville Elementary School
 Fred Anderson Elementary School
 Friends of Gorges State Park
 Fuquay-Varina Middle School
 G.E. Massey Elementary School
 G.W. Bulluck Elementary School
 Gaston College
 Gaston Elementary School
 Gatesville Elementary School
 Given Memorial Library and Tufts Archives
 Glade Creek School
 Google
 GRACE Christian School
 Graham Middle School
 Grandy Primary School
 Green Ridge Elementary School
 Greene County Schools
 Greensboro Science Center
 Guilford Technical Community College: Cline Observatory
 Hall Fletcher Elementary School
 Hammocks Beach State Park
 Hanging Rock State Park

Hardin Park School
 Harold Winkler Middle School
 Harris Elementary
 Harris Middle School
 Hayesville Middle School
 Healthy Start Academy
 Helena Elementary School
 Hendersonville Middle School
 Heritage Middle School
 Hertford Grammar School
 Hiddenite Elementary School
 High Point Museum
 High Point University
 Highland Middle School
 Highlands Biological Foundation
 Hillcrest Elementary School
 Hodge Road Elementary School
 Holly Shelter Middle School
 Horizons Unlimited
 Imagination Station Science and History Museum
 Isothermal Community College
 J. Glenn Edwards Elementary School

J.T. Barber Elementary School
 Jamesville Elementary School
 Jarvisburg Elementary School
 Jockey's Ridge State Park
 John Griffin Middle School
 Johns Hopkins University
 Johnston Community College
 Jones Senior High School
 Jonesville Elementary School
 J.W. Dillard Academy
 Kaleideum
 Kannapolis Library
 Kathleen Clay Library
 Kennedy Middle School
 KidSenses Children's Museum
 Kidzu Children's Museum
 Koontz Elementary School
 LabCorp
 Lake James State Park
 Laurel Hill Elementary School
 Ledford Middle School
 Levine Museum of the New South
 Lincoln County Public Library



Lincoln Elementary School
 Little River Regional Park & Natural Area
 Louisburg Elementary School
 Love A Sea Turtle
 Love Memorial Elementary School
 Lucas Middle School
 M.B. Hubbard Elementary School
 Mabel Elementary School
 Macon County Public Library
 Macon County Schools
 Mad Science of the Triangle
 Manteo Elementary School
 Marbles Kids Museum
 Margaret Hearne Elementary School
 Margaret Willis Elementary School
 Mars Hill Elementary School
 Martin Luther King, Jr. Middle School
 Mary McArthur Elementary School
 Mattamuskeet Early College High School
 Mattamuskeet Elementary School
 McDougale Middle School
 McDowell Nature Center

Meadow Lane Elementary School
 Methodist University
 Mills Park Middle School
 Mocksville Elementary School
 Montford North Star Academy
 Morehead Planetarium & Science Center
 Morrow Mountain State Park
 Morton Elementary School
 Moss Hill Elementary School
 Moss Street Partnership School
 Mountain View Elementary School
 Museum of Life and Science
 NASCAR Hall of Fame
 National Biomechanics Day
 NC Department of Environmental Quality
 NC Museum of Natural Sciences
 NC Museum of Natural Sciences at Prairie Ridge Ecostation
 NC School of Science and Mathematics
 NC Science Olympiad
 NC Space Grant
 NC State University: College of Sciences

NC State University: Public Science Lab
 NC State University: Sustainability Office
 NCSU The Science House
 NC 4-H
 Neuseway Nature Park: Ellis Planetarium
 New Century Middle School
 North Carolina A&T State University: College of Engineering
 North Carolina A&T State University: College of Science and Technology
 North Carolina Department of Transportation
 North Carolina Maritime Museum
 North Carolina Zoo
 North Davidson Middle School
 North Hills Elementary School
 North Rowan High School
 North Rowan Middle School
 North Shelby School
 Northeast Academy for Aerospace and Advanced Technologies
 Northern Middle School
 Northside Elementary School
 Northside K-8 School
 Norwood Elementary School
 Oaks Road Academy
 Oakwood Elementary School
 Ocean Isle Museum Foundation at Ingram Planetarium
 Old Fort Elementary School
 Onslow County Museum and Environmental Education Center
 Opendoor School
 Orange County Public Library
 Oxendine Elementary School
 P.S. Jones Middle School
 Pamlico County Middle School
 Pamlico County Primary School
 Parkwood Elementary School
 Parr Center for Ethics



NCSCIFEST WINS NC MAIN STREET AWARD FOR BEST DOWNTOWN SPECIAL EVENT

The North Carolina Gravity Games, produced by Google in partnership with NCSciFest, the City of Lenoir, and Appalachian State University, was honored at the NC Main Streets conference for this one-of-a-kind STEM event.

Photo by Will and Deni McIntyre

Pasquotank Elementary School
 Pembroke Elementary School
 Pembroke Middle School
 Perimeter Institute
 Perquimans County Middle School
 Petree Elementary School
 Pickett Elementary School
 Piedmont Environmental Alliance
 Piedmont Environmental Center
 Piedmont Wildlife Center
 Pilot Mountain Middle School
 Pilot Mountain State Park
 Pine Hall Elementary School
 Pines Elementary School
 Pitt Community College: Biotechnology Department
 Pollockville Elementary School
 Queen Anne's Revenge Conservation Lab

R. Brown McAllister STEM Elementary
 Randleman Middle School
 Randolph Community College
 Reconnect 2 Nature
 Red Oak Middle School
 Red Springs Middle School
 Reedy Creek Magnet Middle School
 Center for Digital Sciences
 Reidsville Middle School
 Research Triangle High School
 Research Triangle Nanotechnology Network
 Rex Rennert Elementary School
 River Park North
 Riverwood Middle School
 Robbinsville High School
 Robeson Planetarium and Science Center
 Roland-Grise Middle School
 Roseboro Salemburg Middle School

Rosman Elementary School
 Rowan Public Library
 Rowan-Cabarrus Community College
 S.W. Snowden Elementary School
 Salemburg Elementary School
 Saluda Elementary School
 Sandhills Community College
 Sandy Grove Elementary School
 Sarah P. Duke Gardens
 Science Communicators of North Carolina
 Selma Elementary School
 Shady Brook Elementary School
 Sigma Xi
 Siler City Elementary School
 South Asheboro Middle School
 Southview Middle School
 Sparta Elementary School
 Spring Hope Elementary School
 Springfield Middle School
 Star Elementary School
 STEM RTP
 STEM West
 Stocks Elementary School
 Stone Mountain State Park
 Summersill Elementary School
 Surry Community College: Science Division
 Swain County Schools
 Sycamore Lane Elementary School
 Sylvan Heights Bird Park
 T.C. Henderson Elementary School
 T.S. Cooper Elementary School
 Tectonic Plates: Alamance County's Science Cafe
 The Children's Museum of Wilmington
 The Exploris School
 The North Carolina Arboretum
 The North Carolina Leadership Academy
 The Schiele Museum of Natural History

The School for Creative Studies
 The Science of Winston-Salem
 Top of the Hill
 Town of Garner
 Town of Nashville Parks and Recreation
 Triangle Land Conservancy
 Troutman Middle School
 Tucker Creek Middle School
 Tyrrell Elementary School
 U.S. Environmental Protection Agency
 UNC Asheville
 UNC Charlotte
 UNC Greensboro
 UNC Pembroke
 UNC Wilmington
 UNC-TV
 Union County Soil & Water
 Union Elementary School
 Uwharrie Ridge School
 Valmead Elementary School
 Vanceboro Farm Life Elementary School
 Vick Elementary School
 Virginia Cross Elementary School
 W.A. Pattillo Middle School
 Wake County Solid Waste Management Division
 Wake Forest Middle School
 Wakelon Elementary School
 Waldo C. Falkener Sr. Elementary School
 Walker-Spivey Elementary School
 Walnut Creek Elementary School
 Warsaw Elementary School
 Washington Elementary School
 Wayne Avenue Elementary School
 Wayne Christian School
 Wayne Community College
 Wayne County Public Library
 WCNC
 Webb A. Murray Elementary School

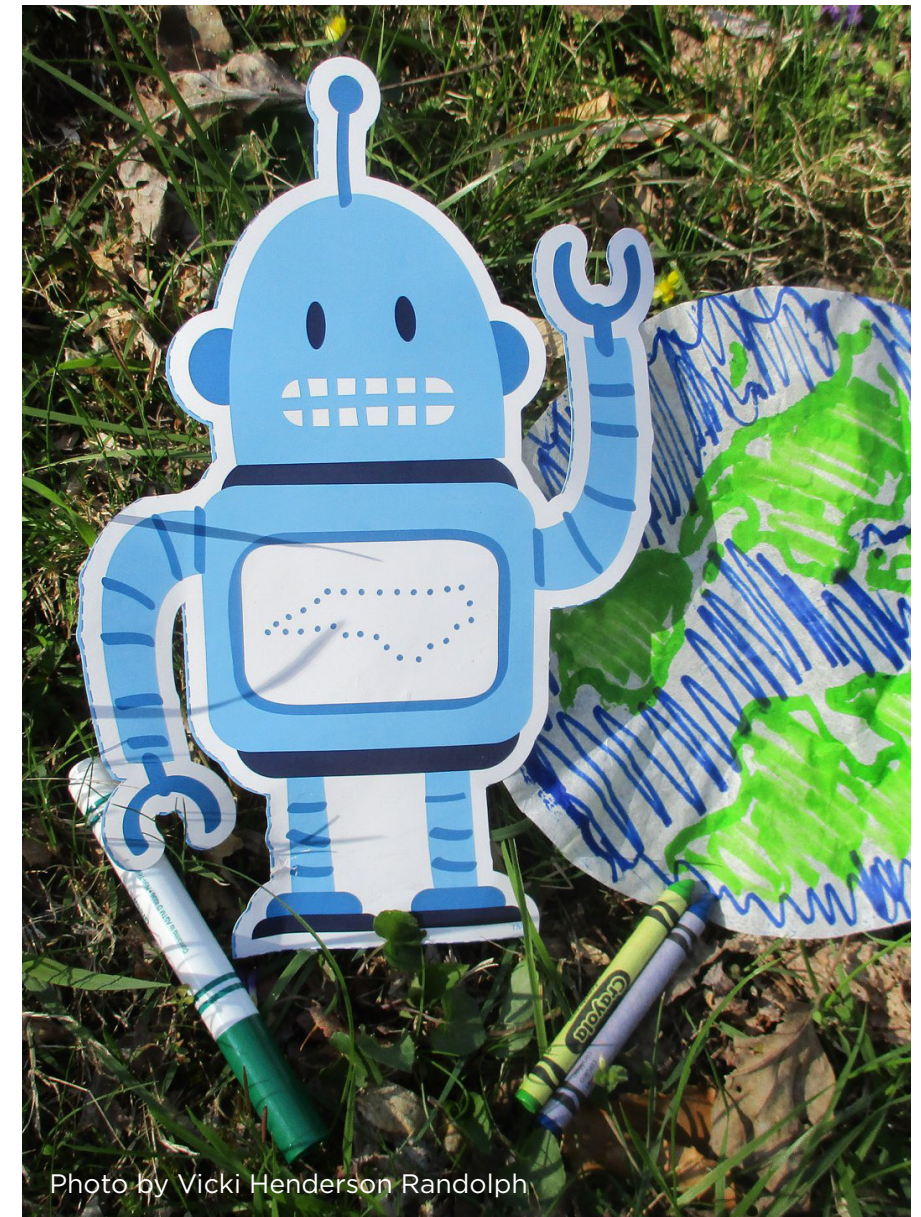


Photo by Vicki Henderson Randolph

Webb Street School
 Wellcome Middle School
 West Greene Elementary School
 West Iredell Middle School
 West Lee Middle School
 West Marion Elementary
 West Rockingham Elementary School
 West Rowan Elementary School
 West Smithfield Elementary School
 Westarea Elementary School
 Western Alamance Middle School
 Western Carolina University
 White Oak Elementary School
 Whiteville Primary School
 Wiley Magnet Middle School
 Wilkerson Nature Preserve
 Wing Haven
 Winstead Elementary School
 Winston-Salem State University
 3M



Photo by Sean Wiseman



APRIL 2020

The North Carolina Science Festival is made possible by the generous support of its sponsors.

PRESENTING SPONSOR



DIAMOND CHAMPION



PLATINUM SPONSORS



GOLD SPONSORS



BRONZE SPONSORS

UNC Health
Michael & Laura Brader-Araje Foundation
North Carolina Space Grant

SUPPORTER

BioNetwork

PROUDLY PRODUCED BY



www.ncsciencefestival.org